

Insider

IID2 Newsletter April 2009

Thank you for all your help!

We are now almost half way through the IID 2 Study (the Second Study of Infectious Intestinal Disease in the community) and things are going really well!

There are now 88 general practices across England, Wales, Scotland and Northern Ireland who are involved and over 7,500 people who are taking part in the study!

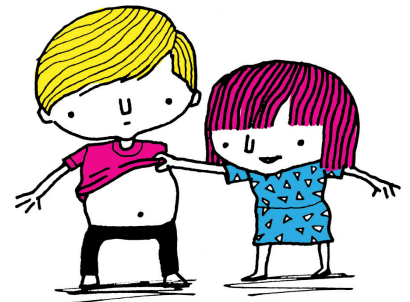
We would like to thank you all for your help and support in making this the biggest ever study into the gut health of the nation.

The information we have collected so far has been very interesting and we are all getting excited to see the final results. These results may be used to shape government policy on food safety to try and reduce tummy bugs.

If you have said that you would like a summary of the results you will receive this when the results are ready after May 2010. If you didn't tick this box on the consent form but have decided you would like a summary then just tell the research nurse at your GP surgery and we'll be happy to send you one.

Further information about the study can be found at www.iid2.org.uk and if you have any other questions then just ask to speak to your research nurse.

Helping us to
reduce
tummy bugs
across the
nation!



Remember to send in your questionnaires!

Remember, if you do have any episodes of diarrhoea and/ or vomiting then please tell us ASAP and send in the questionnaire and stool sample. These are both really important for us to find out about how much gut infection happens in the community and what bugs are causing it. For those of you using e mails to keep in touch, if you are having any problems please let your research nurse know.

Even if you can't get a stool sample please still send the questionnaire/ e mail as this provides us with very useful information!

Do I need to send a sample if...

I have just been vomiting and not had diarrhoea?

Yes: Even if you have just been sick there may still be bugs in the stool that we can detect in the lab.

I forgot to send a sample straight away and feel better now?

Yes: With the specialised techniques our labs use we can detect bugs up to 10 days after you have been ill so it is still very useful for us to have a sample.



It's what's on the inside that counts!